



Darwin's
Limited

The House of Style for Ladies
485 St. Catherine Street West
Montreal

*Styled with Distinctive
Charm of
French Artistry*

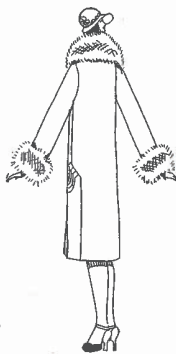
Model No. 956

There are two outstanding features in this fine coat of Good Quality Suedine—the unusual trimming at the side which does not detract from the slenderness and the large collar and cuffs of Moufflonne Fur. A combination of Grace and Beauty—entirely lined with Marquise de Luxe lining.

Sizes: 14 to 42. Material No. 502.

Colors: 33, 34, 35, 36 on shade card.

Price Delivered - \$38.00
Deposit - - - 6.25
Balance C.O.D. - 31.75



Back View

*Spring, Summer, Fall, Winter—
there's a Darwin garment for every
season and occasion, artistically
tailored in up-to-the-minute styles*

